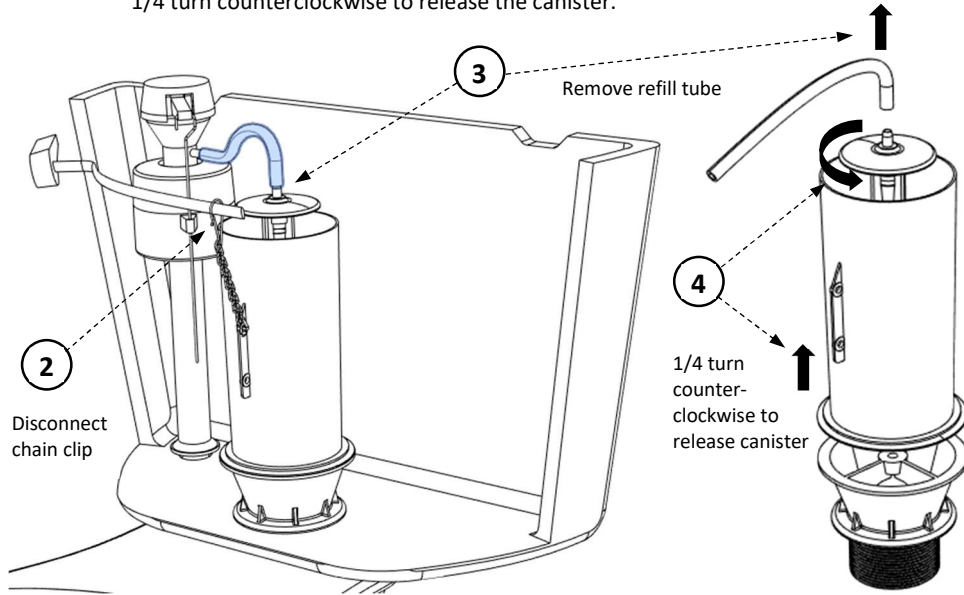


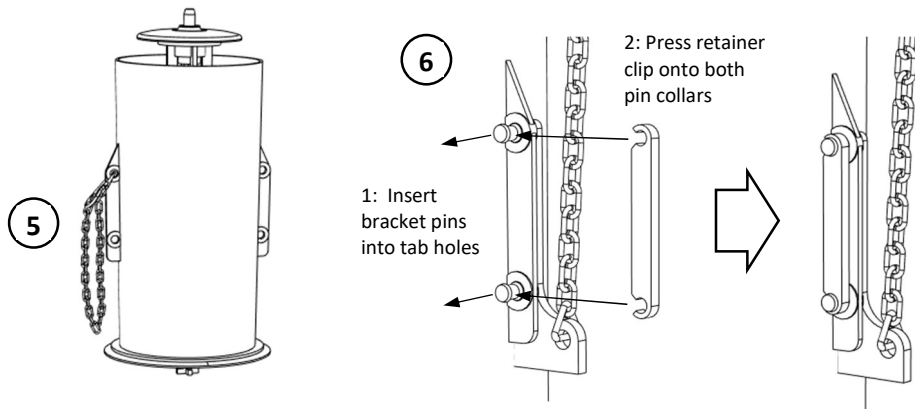
SPECIAL INSTRUCTIONS for CANISTER (Kohler) style air intake shrouds using an Aquapiston style cap with male hose barb connection.

If your Kohler toilet is equipped with a canister flush valve that has a cap with a female refill tube socket instead of a hose barb, a Kohler repair kit (GP1229656) is available at most large home improvement stores.

1. Turn OFF water supply and flush toilet to drain water from the toilet tank.
2. Disconnect the flush chain from the flush lever arm.
3. Disconnect the refill tube from the top of the canister retaining cap.
4. Release the canister assembly from the base of the flush valve by turning the retaining cap 1/4 turn counterclockwise.
 - If the cap comes off instead of the canister, turn the center stalk of the canister another 1/4 turn counterclockwise to release the canister.



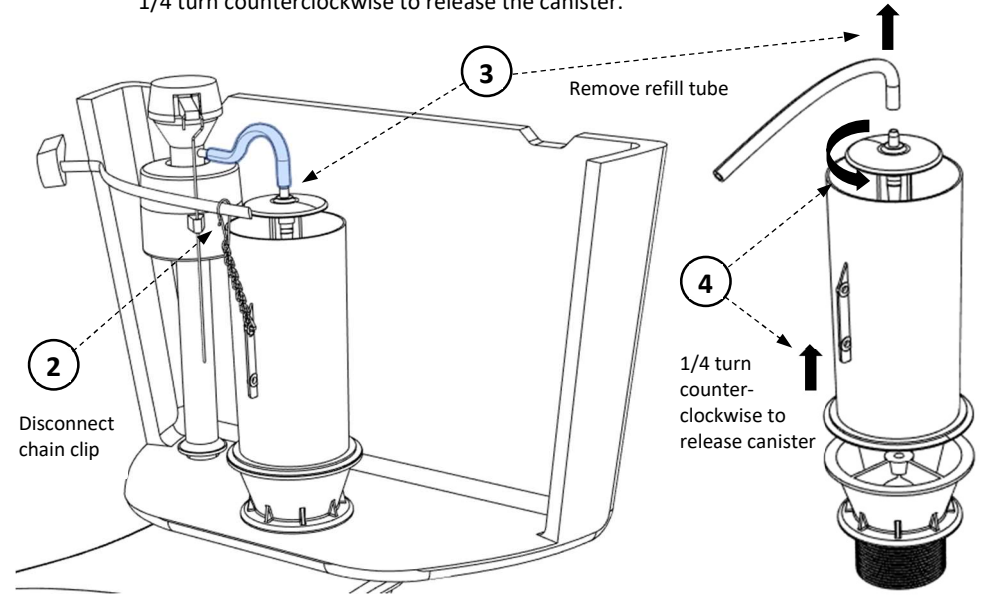
5. Shorten the original chain to the canister by clipping it on itself. (Ensure that the chain is tied back sufficiently to not interfere with the lower flush valve seal)
6. Install the new chain, bracket, and clip assembly to the opposite side chain tab



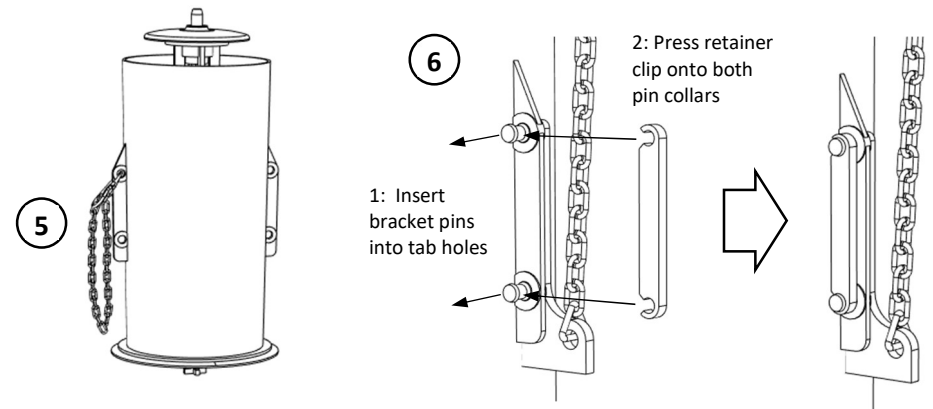
SPECIAL INSTRUCTIONS for CANISTER (Kohler) style air intake shrouds using an Aquapiston style cap with male hose barb connection.

If your Kohler toilet is equipped with a canister flush valve that has a cap with a female refill tube socket instead of a hose barb, a Kohler repair kit (GP1229656) is available at most large home improvement stores.

1. Turn OFF water supply and flush toilet to drain water from the toilet tank.
2. Disconnect the flush chain from the flush lever arm.
3. Disconnect the refill tube from the top of the canister retaining cap.
4. Release the canister assembly from the base of the flush valve by turning the retaining cap 1/4 turn counterclockwise.
 - If the cap comes off instead of the canister, turn the center stalk of the canister another 1/4 turn counterclockwise to release the canister.



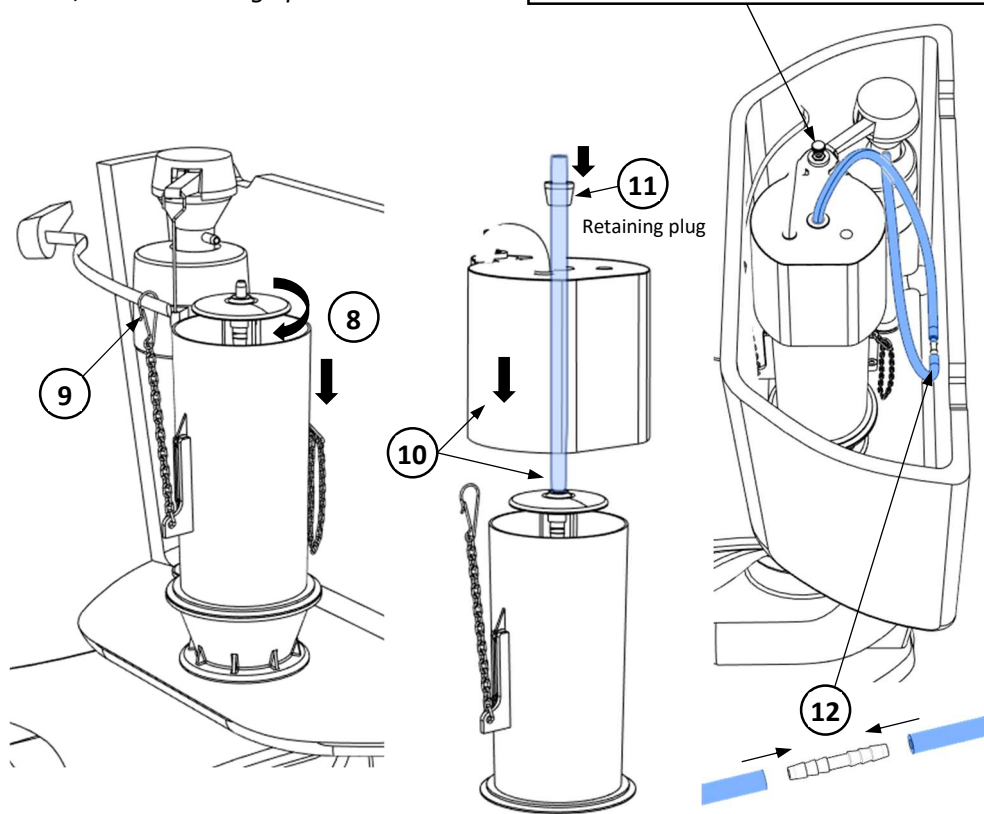
5. Shorten the original chain to the canister by clipping it on itself. (Ensure that the chain is tied back sufficiently to not interfere with the lower flush valve seal)
6. Install the new chain, bracket, and clip assembly to the opposite side chain tab



7. Inspect the lower flush valve seal for wear or damage. Replace as needed
8. Reinstall the canister assembly by lining up and inserting the bottom peg of the canister center post into the flush valve base. Turn the center post 1/4 turn clockwise to lock the canister assembly back into position
9. Connect the new chain to the flush lever and adjust the clip position to take up any chain slack. Verify that the canister motion is acceptable before continuing
10. Install the new refill tube onto the Aquapiston cap and slide the air intake manifold down the tubing and over the top of the canister. The relief float should be angled towards the left or right side of the canister to so that the new chain bracket can enter the bottom of the intake manifold and to avoid other items inside the tank
11. Slide the retaining plug down the tubing and into the top socket of the intake manifold to secure the position of the manifold
12. Use the included straight barb tubing connector to join the end of the new refill tube to the original refill tube. Excess tubing may be coiled and stowed between the intake manifold and back wall of the tank.

Follow regular instructions for installing the Sniffer pump, exhaust fittings, button switch, and low voltage power.

NOTE: If the "barely closed" setting cannot be reached when adjusting the vacuum relief valve, then adjust the valve nut to the fully extended position where it contacts the thumb screw



7. Inspect the lower flush valve seal for wear or damage. Replace as needed
8. Reinstall the canister assembly by lining up and inserting the bottom peg of the canister center post into the flush valve base. Turn the center post 1/4 turn clockwise to lock the canister assembly back into position
9. Connect the new chain to the flush lever and adjust the clip position to take up any chain slack. Verify that the canister motion is acceptable before continuing
10. Install the new refill tube onto the Aquapiston cap and slide the air intake manifold down the tubing and over the top of the canister. The relief float should be angled towards the left or right side of the canister to so that the new chain bracket can enter the bottom of the intake manifold and to avoid other items inside the tank
11. Slide the retaining plug down the tubing and into the top socket of the intake manifold to secure the position of the manifold
12. Use the included straight barb tubing connector to join the end of the new refill tube to the original refill tube. Excess tubing may be coiled and stowed between the intake manifold and back wall of the tank.

Follow regular instructions for installing the Sniffer pump, exhaust fittings, button switch, and low voltage power.

NOTE: If the "barely closed" setting cannot be reached when adjusting the vacuum relief valve, then adjust the valve nut to the fully extended position where it contacts the thumb screw

